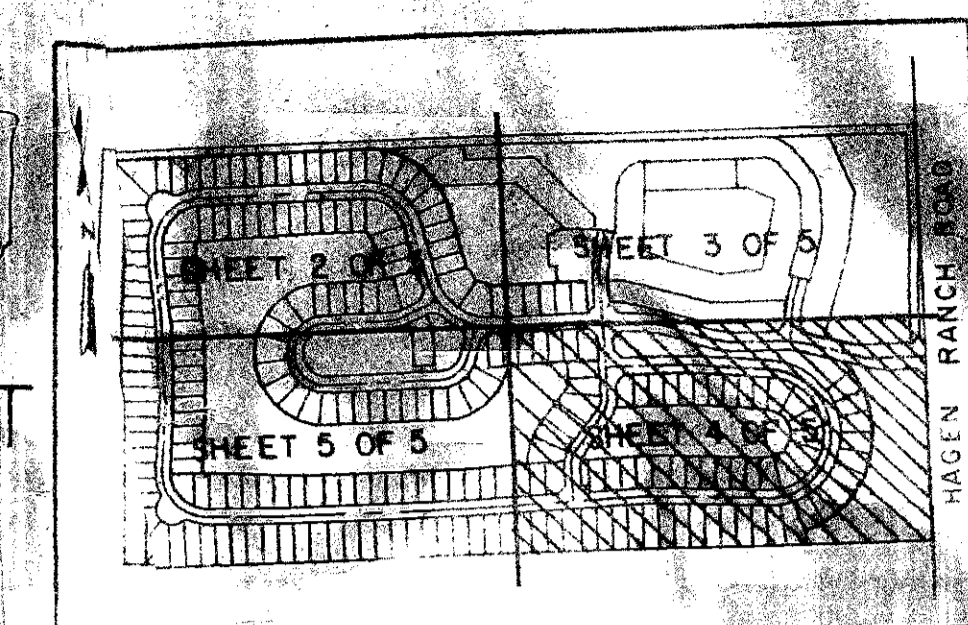


PINE RIDGE AT DELRAY BEACH

BEING A REPLAT OF A PORION OF
PALM BEACH FARMS COMPANY PLAT NO. 1
SITUATE IN SECTION 9, TOWNSHIP 46 SOUTH, RANGE 42 EAST
PALM BEACH COUNTY, FLORIDA

AUGUST, 1987

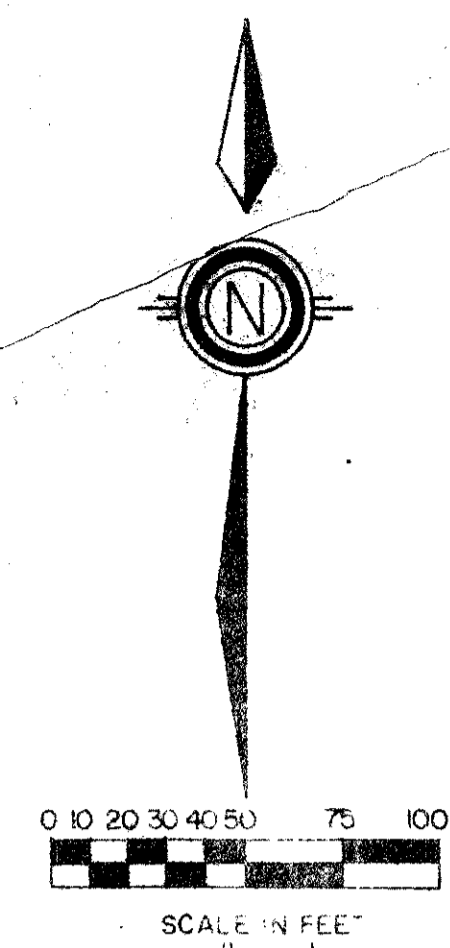
SHEET 4 OF 5



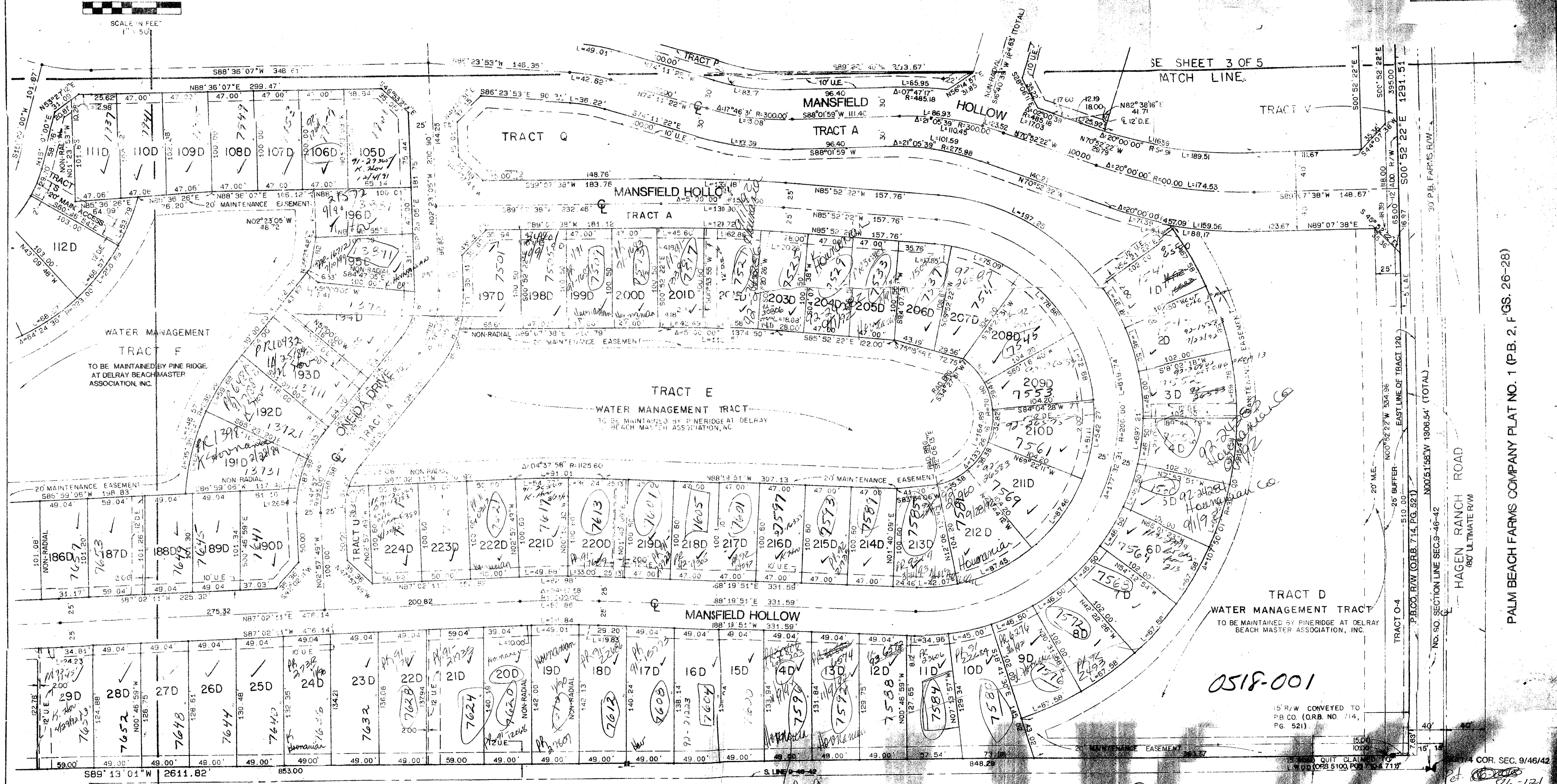
SHEET INDEX MAP

STATE OF FLORIDA
COUNTY OF PALM BEACH
THIS PLAT WAS FILED FOR
RECORD
THIS _____ DAY OF _____
AD. _____ AND DULY RECORDED
IN PLAT BOOK _____ ON PAGE

BY: JOHN B. DUNKLE, CLERK



SCALE IN FEET
1" = 50'



7/14/87
Pine Ridge of Delray Beach
58
51
PB
PB Farms, Inc.
TAZ 459
500A
RS
3344C

SEE SHEET
5 OF 5
MATCH LINE

HAGEN RANCH ESTATES BOUNDARY PLAT
(PB 50, PGS 125 - 126)

CHECKED BY *[Signature]*

TURNOUT REQUIRED

Meridian
Surveying and Mapping, Inc.
DRAWN DATE MAY '87
CHECKED SCALE 1" = 50'
DRAWING NO. 09218 PL

PINE RIDGE AT
DELRAY BEACH

PALM BEACH FARMS COMPANY PLAT NO. 1 (P.B. 2, PGS. 26-28)

2000 LOMBARD STREET
WEST PALM BEACH, FL

0518-001